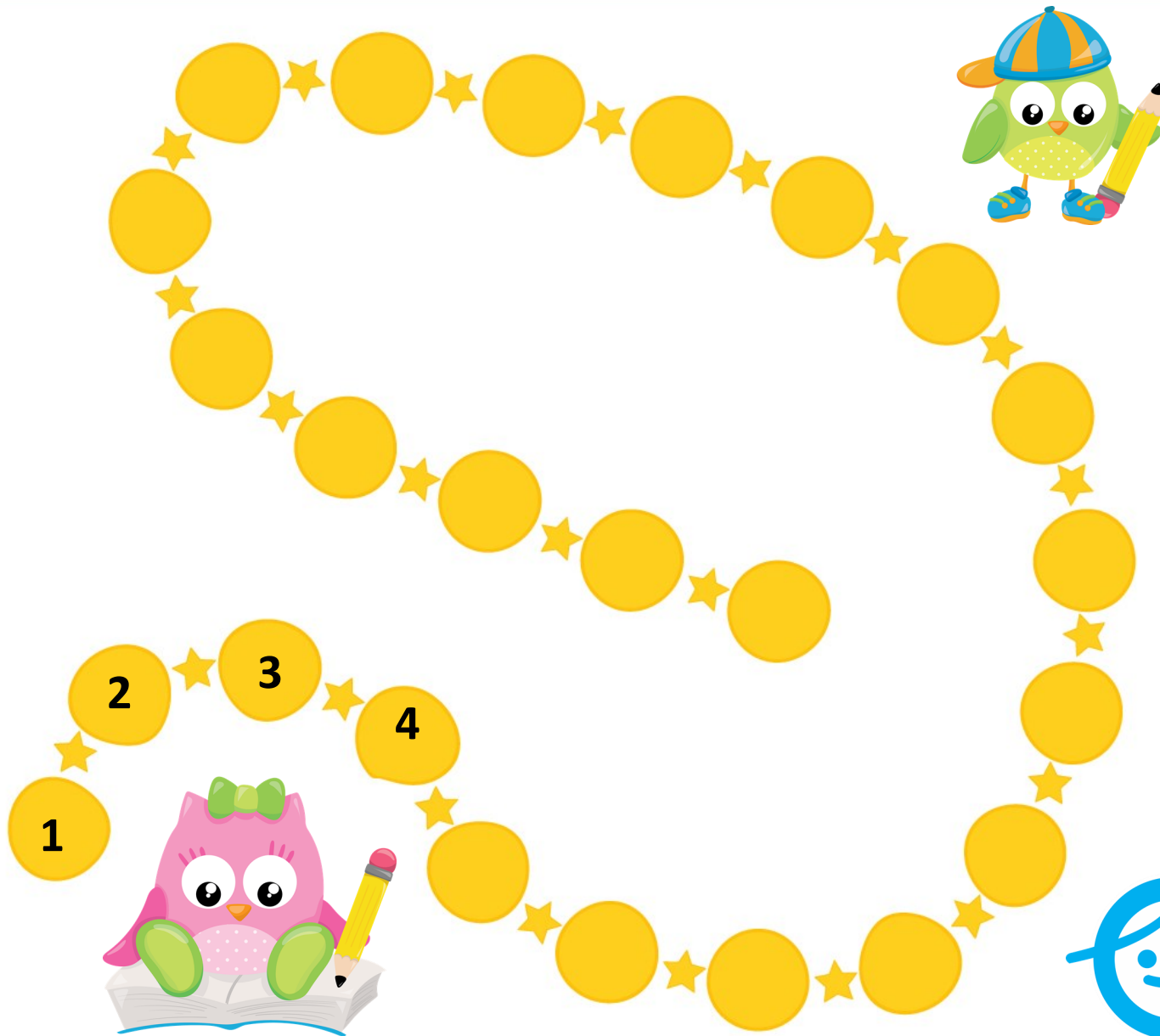
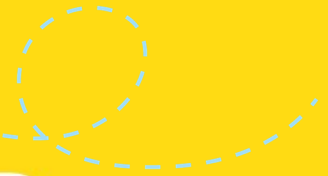


CONTINÚA LA SERIE

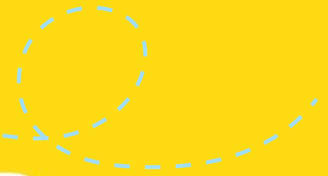


ChannelKIDS
innovando en un clic

CONTINUÁ LA SERIE



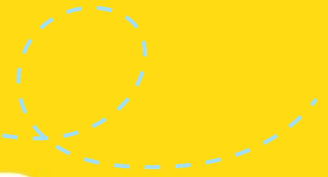
CONTINÚA LA SERIE



A large yellow path made of circles and stars, forming a square shape. At the top right is a yellow school bus with "SCHOOL BUS" on top and a red "STOP" sign. At the bottom left is a cartoon monkey holding books. The path starts with a circle containing the number 2, followed by 4, 6, and 8. The rest of the path consists of empty circles connected by small yellow stars.



CONTINUÁ LA SERIE

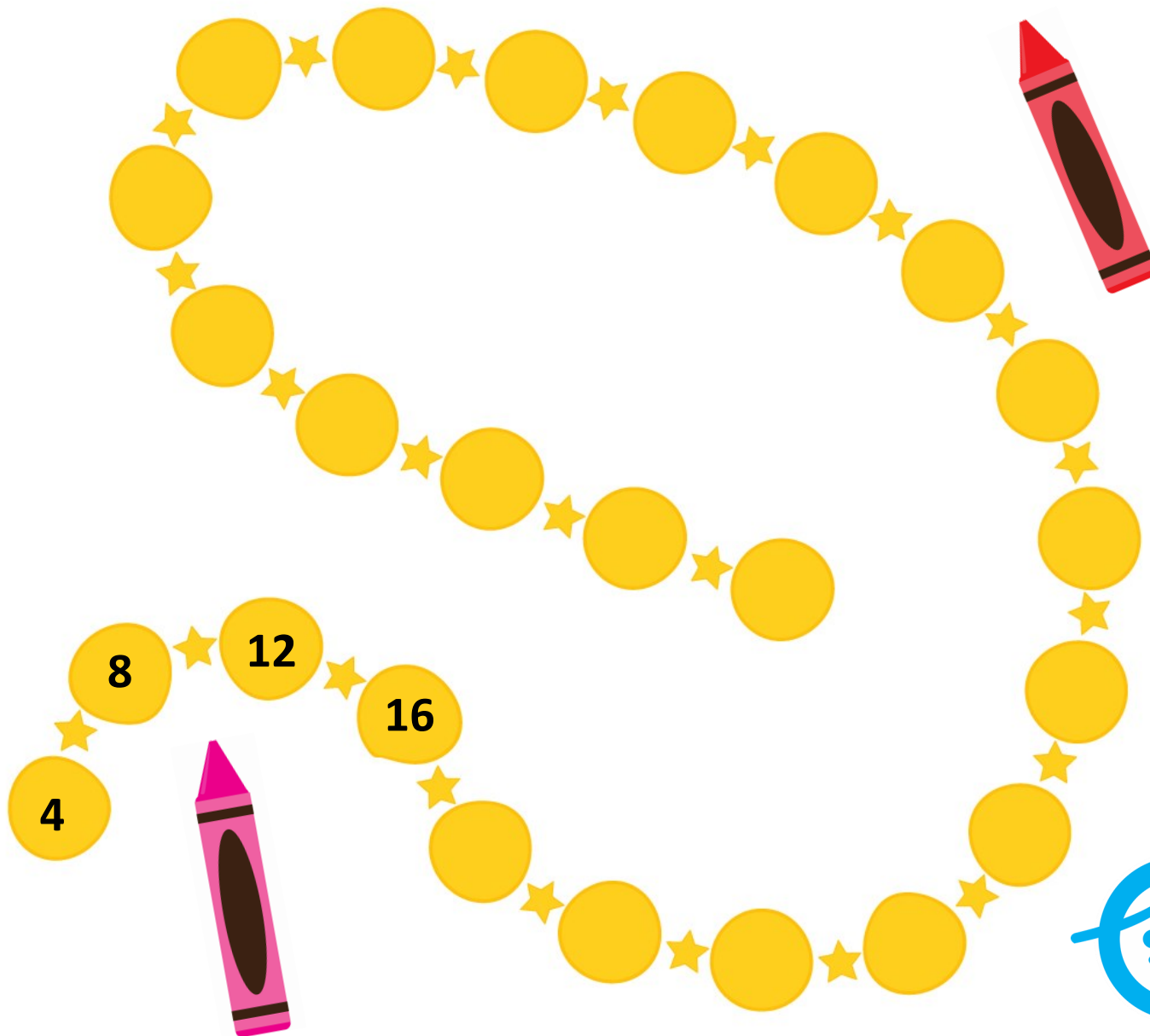


3 6 9 12

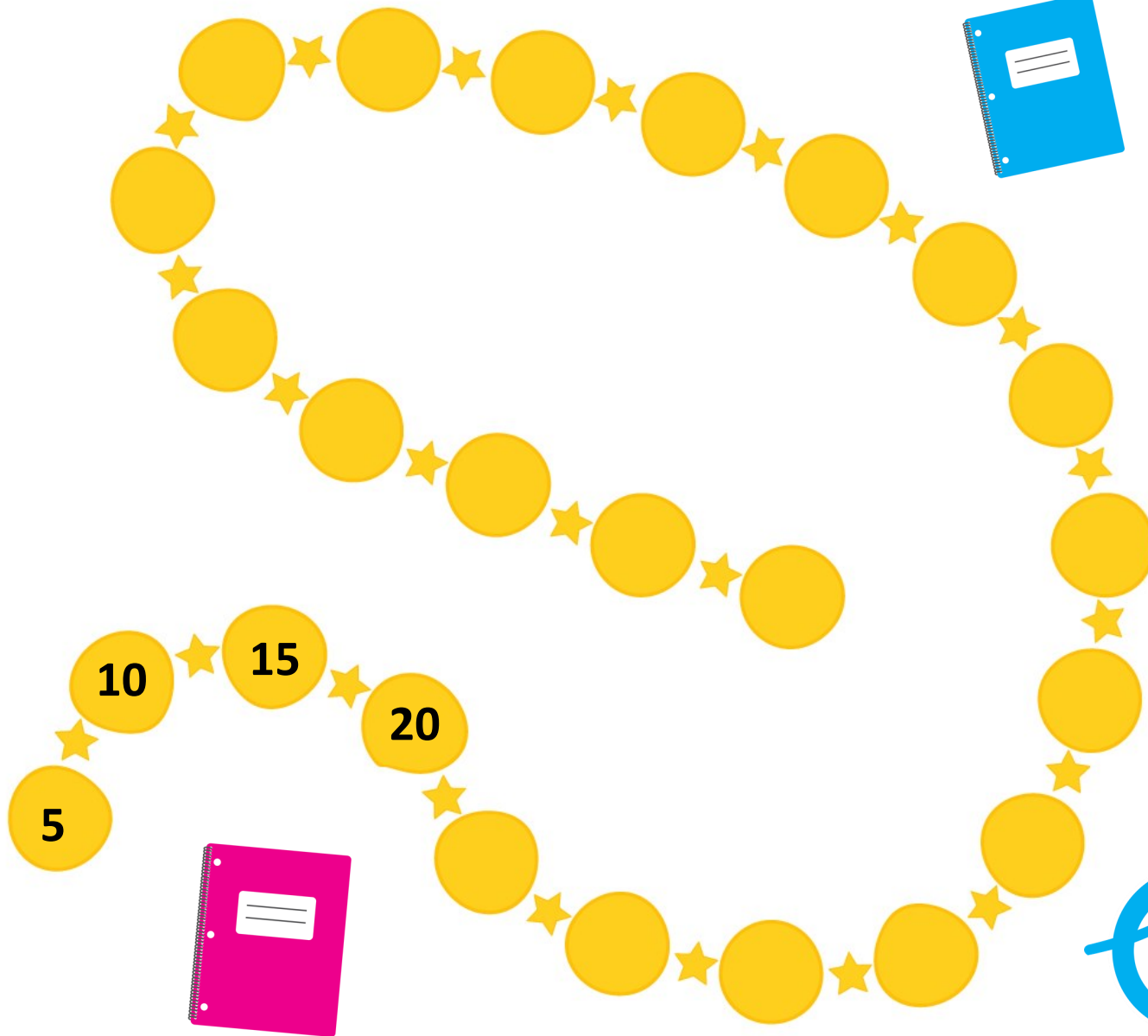
7	8	9	-
4	5	6	×
1	2	3	÷
0	.	=	+



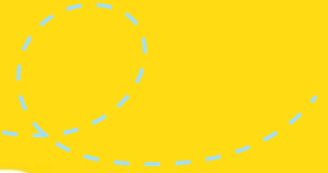
CONTINÚA LA SERIE



CONTINÚA LA SERIE



CONTINÚA LA SERIE



CONTINÚA LA SERIE



7 14 21 28



CONTINUÁ LA SERIE



8 16 24 32



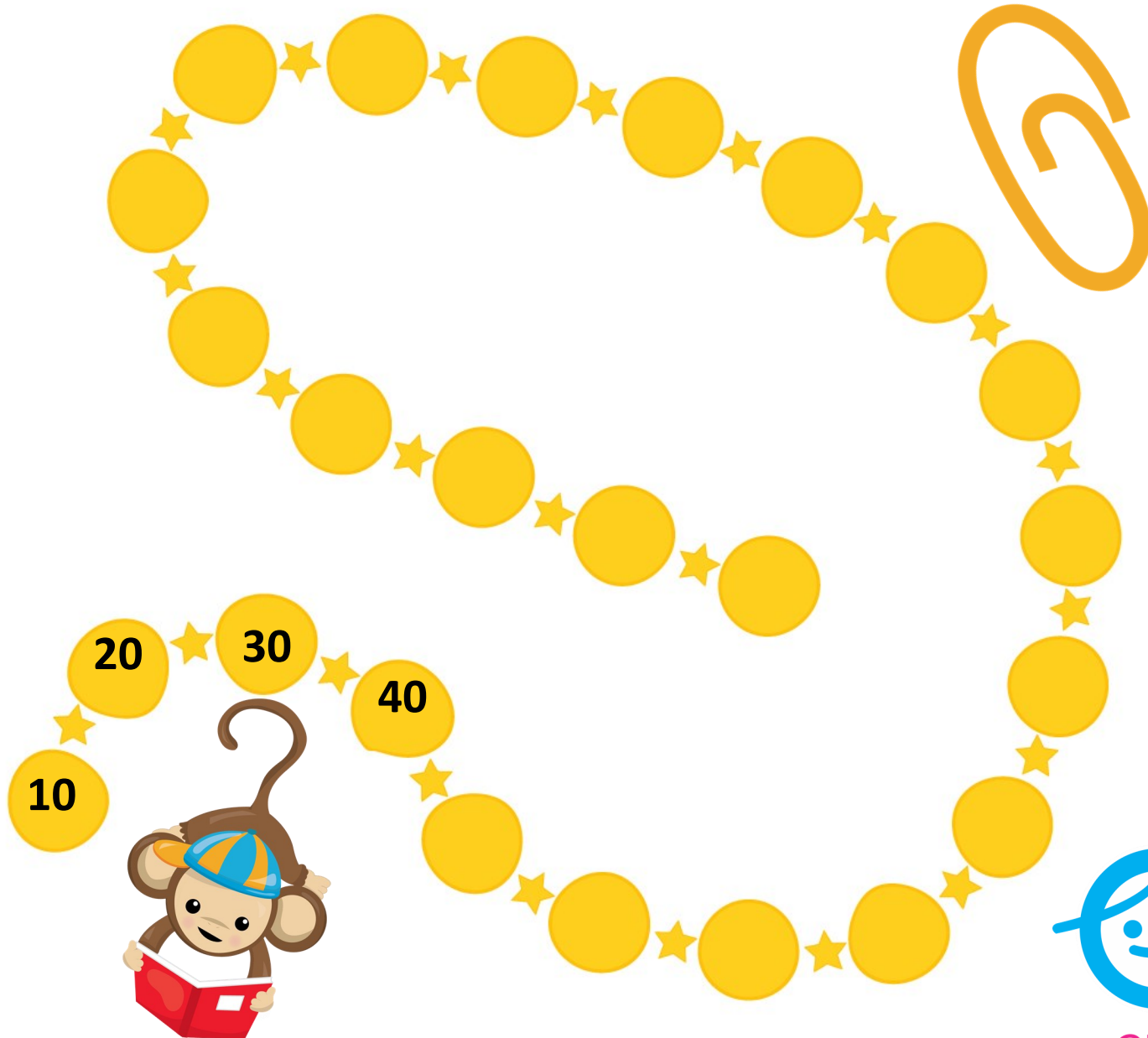
CONTINUÁ LA SERIE



A large circular path of yellow circles connected by stars, forming a spiral shape. The path starts at the bottom left with the number 9, followed by 18, 27, and 36. The rest of the path consists of empty yellow circles. A blackboard icon is positioned at the top right of the path.



CONTINÚA LA SERIE



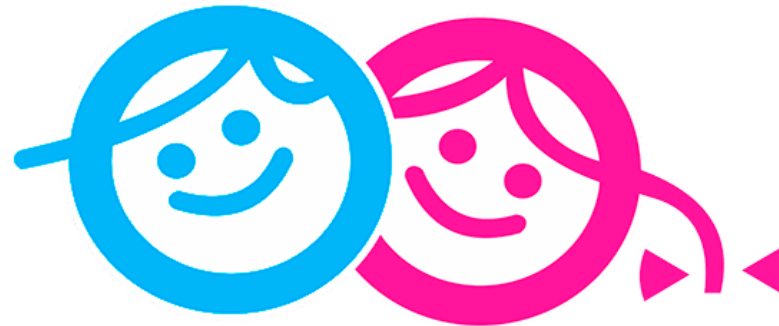
CREDITOS



Font Meme



DISEÑADO POR



ChannelKIDS
innovando en un clic